

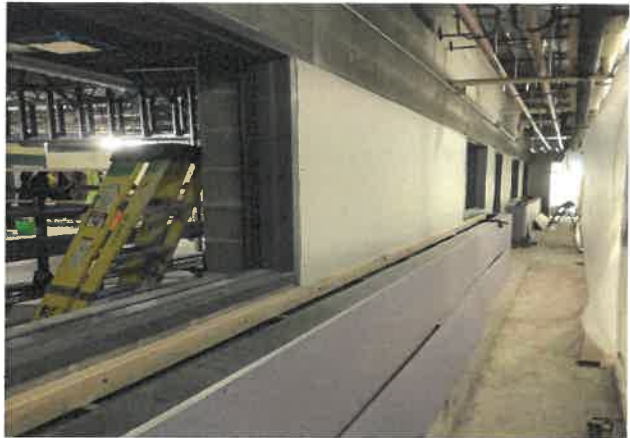
Construction Weekly Update

Week of January 13, 2020

Wittenberg Birnamwood Schools



High School Enviro Building



High School interior corridor



Wittenberg Elem enclosed and heated



Birnamwood Elem interior framing

Update

The HS interior framing and drywall ongoing. Mechanical installation will be ongoing in rooms and shop area. Enviro building floor pour complete this week.

Wittenberg Elem exterior stud walls complete. Roofing, 1st floor concrete and interior framing to start this week. Demo at connection points underway.

Birnamwood Elem Roofing complete. Interior stud wall framing ongoing, along with mechanical rough in throughout the space.

About Hoffman

Hoffman Planning, Design & Construction, Inc. is an integrated Total Project Management firm based in Appleton, Wisconsin. We partner with our clients to create innovative designs and build high quality, functional, attractive, energy efficient facilities at costs at or below projects delivered using traditional design and construction methods. Currently in our fifth generation of leadership, Hoffman continues to deliver the same expert service and superior value our clients have come to appreciate.