

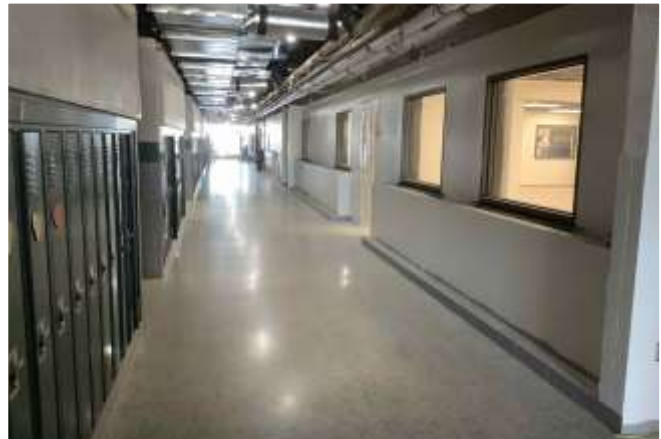
Construction Weekly Update

Week of February 17, 2020

Wittenberg Birnamwood Schools



High School Finished Floors



High School East Corridor



Wittenberg Elem Drywall Installation



Birnamwood Elem Finish Painting

Update

The HS interior ceiling tile removal to continue at the 2nd floor, with misc. finishes in the shop area. Enviro building drywall finish will complete this week to make ready for paint. Wittenberg Elem will see drywall installation and finishing throughout the week. Birnamwood Elem with painting complete, ceilings, fixtures, ceramic tile to follow. Window installation delayed as the glass was backordered.

About Hoffman

Hoffman Planning, Design & Construction, Inc. is an integrated Total Project Management firm based in Appleton, Wisconsin. We partner with our clients to create innovative designs and build high quality, functional, attractive, energy efficient facilities at costs at or below projects delivered using traditional design and construction methods. Currently in our fifth generation of leadership, Hoffman continues to deliver the same expert service and superior value our clients have come to appreciate.