

Construction Weekly Update

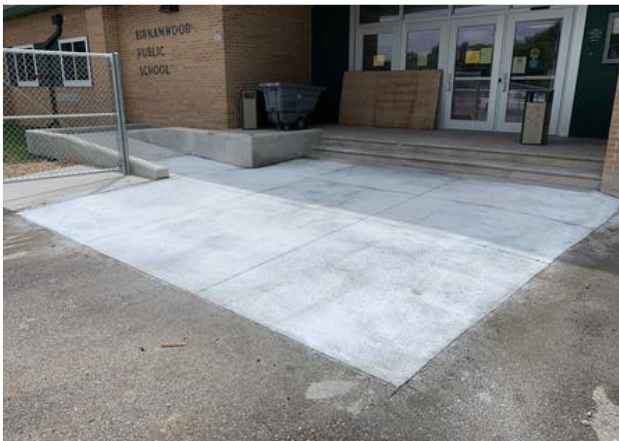
Week of July 13th, 2020 - Wittenberg Birnamwood Schools



HS New Auditorium Ceiling



Ag Building Stone Landscaping



Birnamwood Front Entrance



Wittenberg Elementary Asphalt (1st layer)

Update:

HS/Ag – New ceilings continue to go in throughout the high school. The high school will have a power shut down this week for transfer of new electrical work. There will be a crane on site to lift the new air handling unit into the second floor mechanical room. Animal penning will be finished up by end of week. Final asphalt layer will be paved and sod will be going in around Ag Building.

Witt Elem – Renovated classrooms are near completion. All renovated rooms were quality checked and a couple loose items will be squared away by week end. Asphalt is near completion around the new addition and sod will follow.

Birnamwood Elem – Asphalt by new addition will be completed this week. Exterior items will be complete. Interior renovations will be coming to a close in the next week or so. Construction for the new in-school suspension room is underway. Railings for the new handicap ramp and stairs will be installed shortly.

About Hoffman

Hoffman Planning, Design & Construction, Inc. is an integrated Total Project Management firm based in Appleton, Wisconsin. We partner with our clients to create innovative designs and build high quality, functional, attractive, energy efficient facilities at costs at or below projects delivered using traditional design and construction methods. Currently in our fifth generation of leadership, Hoffman continues to deliver the same expert service and superior value our clients have come to appreciate.