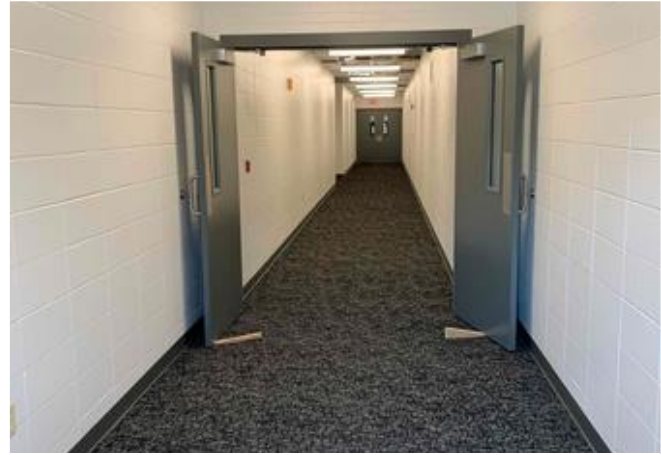


Construction Weekly Update

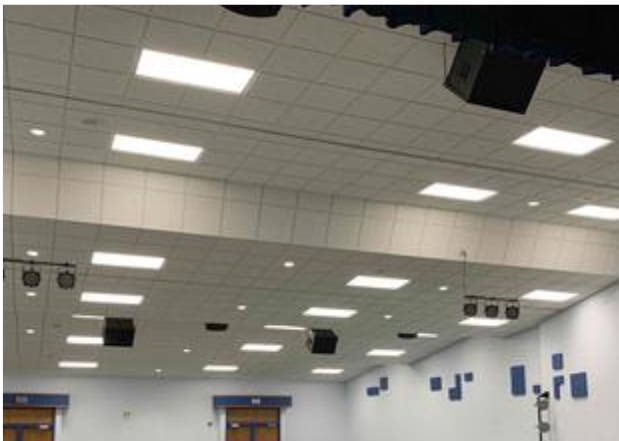
Week of August 3rd, 2020 - Wittenberg Birnamwood Schools



Ag Building Interior Finishes



HS Flooring



HS Auditorium Ceiling and Lights



Witt Elem Stairwell Painting

Update:

HS/Ag – Many rooms/areas have been signed off to the school. Construction finishes continue, with quality check to follow. HVAC work continues to be monitored and progress is being made every day. The Ag building will receive a quality check walkthrough this week, with a sign off to follow. There will be a lot happening this month, with lots of noticeable progress as flooring, ceilings, and accessories continue to be installed throughout many areas.

Witt Elem – All renovation areas have been signed off to the school this week. An ongoing list of small items to complete will be most of the work in the following weeks. New ceilings and lights will continue to be installed in the hallways, along with stair wells being painted. Everything is coming together in a timely fashion.

Birnamwood Elem – All renovation areas have been signed off to the school. All open items in the addition have been wrapped up. Majority of work in the following weeks is for the new ISS Room. This includes floor base, ceilings, lights, window glass, and doors.

About Hoffman

Hoffman Planning, Design & Construction, Inc. is an integrated Total Project Management firm based in Appleton, Wisconsin. We partner with our clients to create innovative designs and build high quality, functional, attractive, energy efficient facilities at costs at or below projects delivered using traditional design and construction methods. Currently in our fifth generation of leadership, Hoffman continues to deliver the same expert service and superior value our clients have come to appreciate.